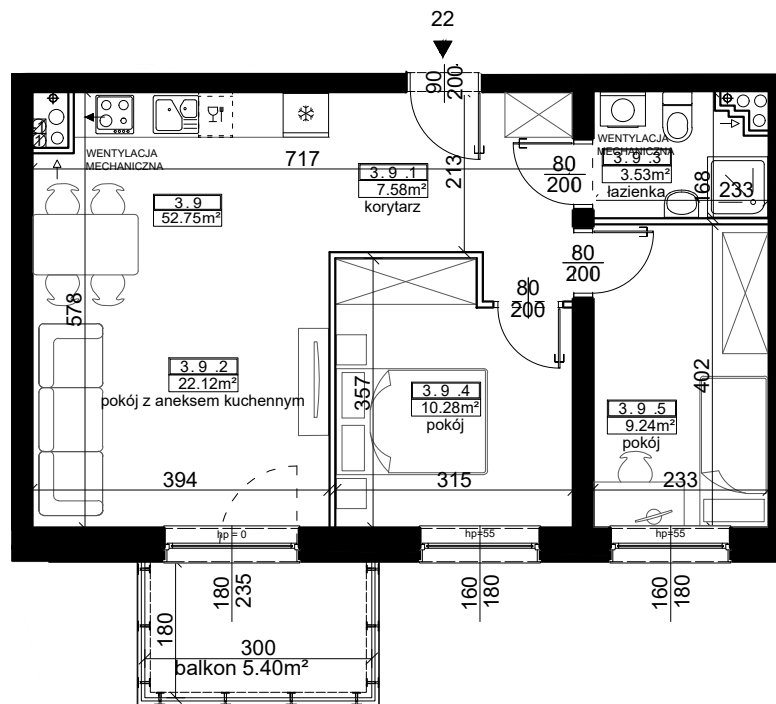
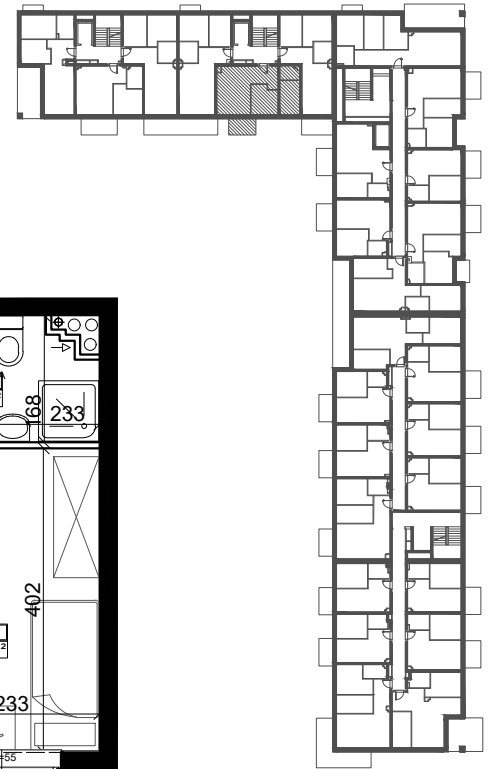




BUDYNEK A



ZESTAWIENIE POWIERZCHNI

| | |
|---------------------------|----------------------|
| KORYTARZ | 7,58 m ² |
| POKÓJ Z ANEKSEM KUCHENNYM | 22,12 m ² |
| ŁAZIENKA | 3,53 m ² |
| POKÓJ | 10,28 m ² |
| POKÓJ | 9,24 m ² |

PU = 52.75 m²

